

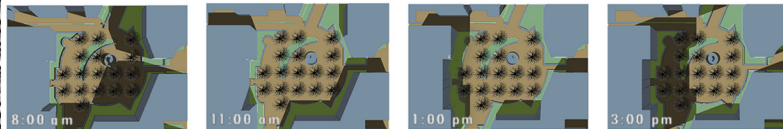
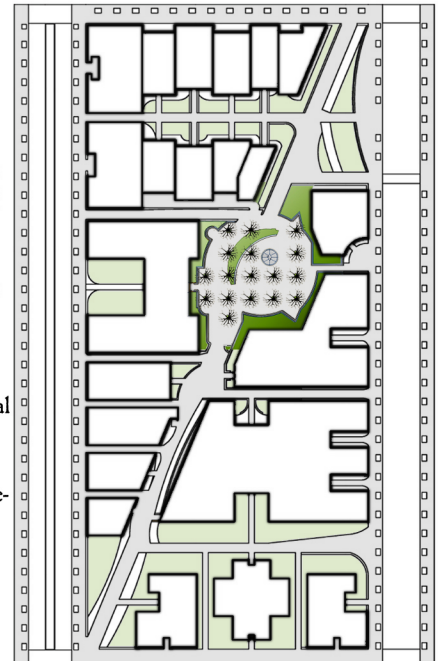
## PLANTING DESIGN STUDIO

Professor Debra Georg  
Winter 2004

Planting design explores the form and function of plant materials in specific design applications. In this studio, the site was Hyde Park on Chicago's south side. A superblock of derelict apartment buildings adjacent to the University of Chicago was chosen as the location for a redevelopment project including a pathway linking busy 53rd Street to the University and a central courtyard to serve residents of rehabilitated apartment blocks. A rushing stepped fountain and a dense planting of red dogwood, sweetgum, scarlet oak and red maple provide passersby a brief respite from the urban pace. Shadow studies, derived from 3D models detail the amount of daylight allocated each area for fine-tuning the planting plan and indicating specific varieties and cultivars.

### Central Courtyard & Superblock Redesign:

English Gothic was the original style of architecture for the University by Henry Cobb in the late 19th Century. The design for the central courtyard accepts the historical significance of this choice, but reenvision the formal precepts of the gothic tennets.



### JASON M. BRABBS, MLA

6 1 4 . 2 1 8 . 1 4 3 8  
3 2 9 W I L B E R 2  
C O L U M B U S O H I O 4 3 2 1 5  
b r a b b s . 1 @ o s u . e d u

